

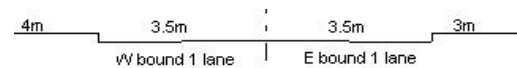
YEAR 2020

CORE STATION 5010

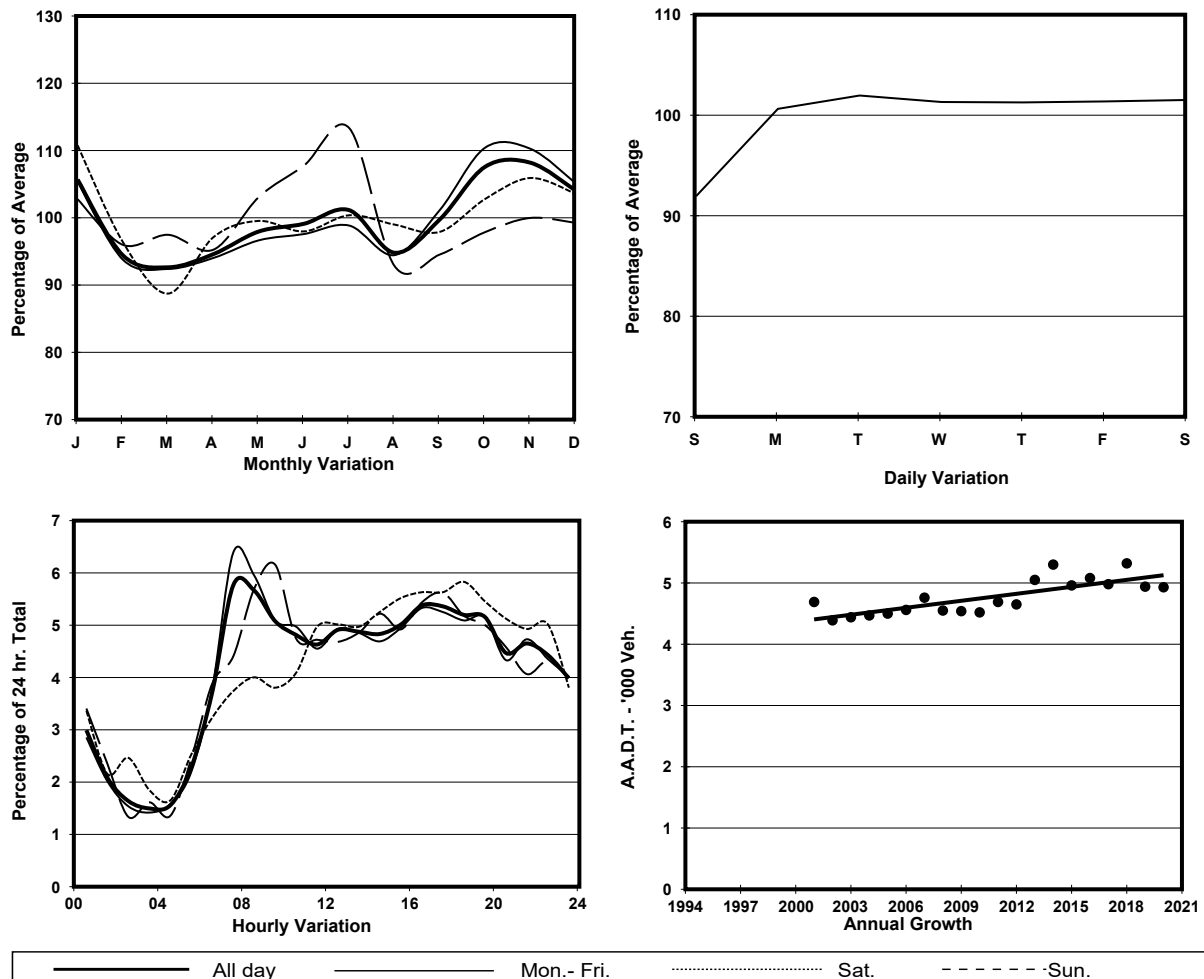
ROAD NETWORK MAJOR

ROAD TYPE LOCAL DISTRIBUTOR

LINK KWAI LUEN RD (from KWAI SHING CIRCUIT EASTERN JUNCTION to KWAI SHING CIRCUIT WESTERN JUNCTION)



1. TRAFFIC FLOW VARIATION AND GROWTH



2. TRAFFIC CHARACTERISTICS (BY DIRECTION)

Parameter	All - Day	Mon. - Fri.	Sat.	Sun.
EAST BOUND				
A.A.D.T.	2320	2340	2290	2270
R 12 / 24 - %	61.6	62	61.1	59.6
R 16 / 24 - %	80.7	81.1	79.5	79.9
AM Peak Hour	0800-0900	0700-0800	0900-1000	0900-1000
One-way flow at AM peak hour	130	140	160	90
T - % (AM)	-	-	-	-
PM Peak Hour	1600-1700	1600-1700	1800-1900	1700-1800
One-way flow at PM peak hour	130	130	130	140
T - % (PM)	-	-	-	-
Prop.of commercial vehicles - 16 hr.	-	-	-	-
WEST BOUND				
A.A.D.T.	2610	2670	2730	2300
R 12 / 24 - %	61.5	62.2	62.1	57.4
R 16 / 24 - %	79.9	80.3	79.7	78
AM Peak Hour	0700-0800	0700-0800	0800-0900	0800-0900
One-way flow at AM peak hour	160	180	160	100
T - % (AM)	-	-	-	-
PM Peak Hour	1600-1700	1600-1700	1700-1800	1600-1700
One-way flow at PM peak hour	140	140	160	130
T - % (PM)	-	-	-	-
Prop.of commercial vehicles - 16 hr.	-	-	-	-

3. OTHER INFORMATION AND COMMENT